

**Plitka yotqizish**

Kirish

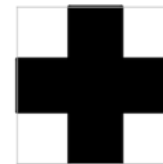
*Kirishni o'qing. So'ngra "KEYINGISI" tumasini bosing.*

**Plitka yotqizish**

Usta polga plitka yotqizmoqda. U foydalanishi mumkin bo'lgan ikki xil: A plitka va B plitkalar bor.

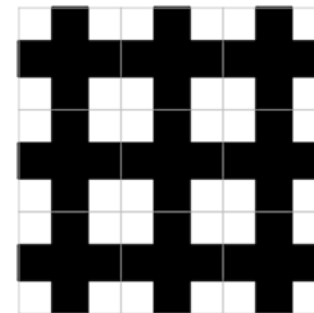
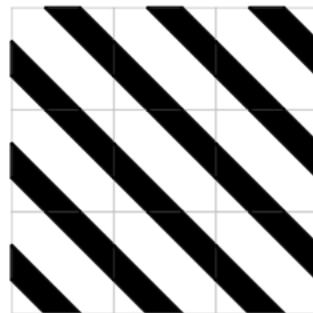


A plitka



B plitka

Usta faqat A plitkadan foydalanib, quyidan chapdagi naqshni hosil qiladi. U faqat B plitkadan foydalanib, quyidan o'ngdagi naqshni hosil qiladi.



**Plitka yotqizish**

Savol 1/5

*O'ng tomondagi "Plitka yotqizish" ga qarang. Muammoni hal qilish uchun shaklni sichqoncha yordamida siljitib joylashtirish amalidan foydalaning.*

O'ng tomondagi plitka naqshi ikkita plitka kombinatsiyasidan hosil bo'ladi. Usta naqshni xuddi shu tarzda kengaytirib, polga plitkalarni yotqizishda davom etmoqda.

Naqshni o'rganing.

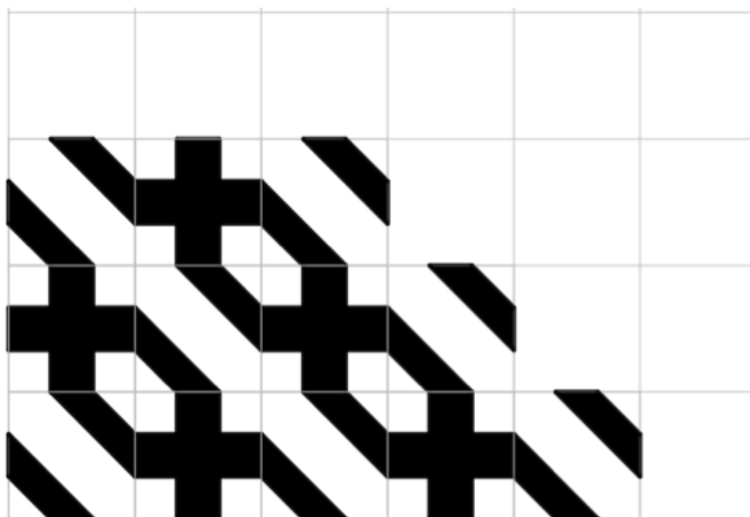
Plitkalarni ma'lum bir joyga siljitib joylash uchun sichqonchadan foydalaning va xuddi shu naqsh asosida polning qolgan qismiga plitka yotqizishni tugating.

**Plitka yotqizish**

A plitka



B plitka





**Plitka yotqizish**

Savol 2/5

O'ng tomondagi "Plitka yotqizish" ga qarang. Muammoni hal qilish uchun shaklni sichqoncha yordamida siljitib joylashtirish amalidan foydalaning.

Usta shunday naqsh yasashni istagan odamlar uchun ko'rsatmalar berishi mumkin bo'lgan yo'riqnomatuzmoqchi.

O'ng tomondagi naqshni hosil qilishga mo'ljallangan yo'riqnomani tuzish uchun quyidagi elementlarni mos ravishda tegishli joyga siljitib joylang:

agar

u holda

aks holda

A plitka

B plitka

Plitka yotqizish yo'riqnomasi

1 -qatordan 4-qatorgacha

"Avval qatordagi chap plitkani aniqlang:"

agar

qator toq raqamli bo'lsa,

u holda

birinchi plitka

aks holda

birinchi plitka

"Qator to'ldirishni shu zaylda davom ettiring:"

agar

oldingi plitka

bo'lsa,



ishlatiladi.



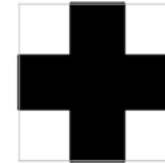
ishlatiladi.

Keyingi qator

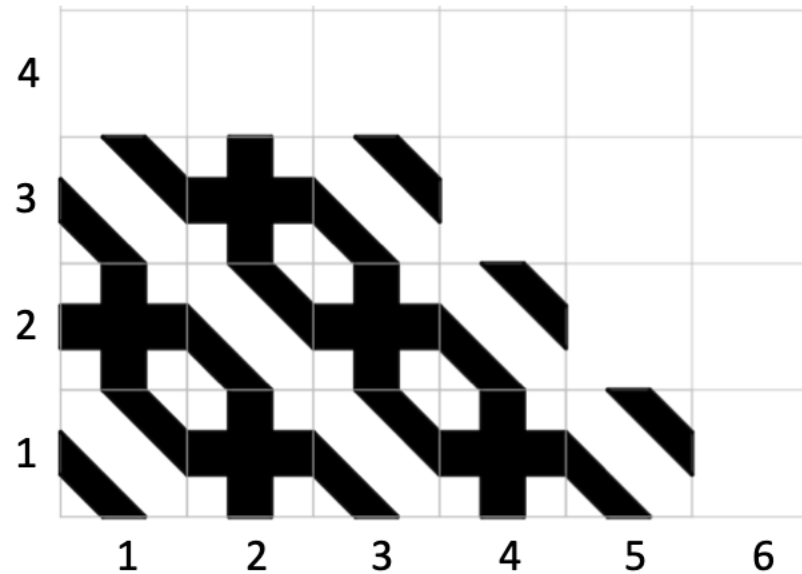
**Plitka yotqizish**



A plitka



B plitka





## Plitka yotqizish

Savol 3/5

O'ng tomondagi "Plitka yotqizish"ga qarang. Muammoni hal qilish uchun shaklni sichqoncha yordamida siljitib joylashtirish amalidan foydalaning. Usta istalgan joydagi naqsh katakchalariga qaysi plitka joylashishini oldindan bilmoqchi. Masalan,  $u(m; n)$  bilan belgilangan joyga qaysi plitka ishlatilishini bilmoqchi.

Qizil ramkaga olingan 4 ta plitkadan iborat naqshni o'rganib chiqing. Quyidagi qoidalarning qaysilari istalgan joydagi plitkani aniqlashga imkon beradi.

Qoida	
Agar $m + n$ toq son bo'lsa, A plitkani ishlatib, aks holda B plitkani ishlatib	<input type="radio"/>
Agar $m + n$ juft son bo'lsa, A plitkani ishlatib, aks holda B plitkani ishlatib	<input type="radio"/>
Agar $m \times n$ toq son bo'lsa, A plitkani ishlatib, aks holda B plitkani ishlatib	<input type="radio"/>
Agar $m \times n$ juft son bo'lsa, A plitkani ishlatib, aks holda B plitkani ishlatib	<input type="radio"/>
Agar $m$ va $n$ sonlar toq bo'lsa, A plitkani ishlatib, aks holda B plitkani ishlatib	<input type="radio"/>
Agar $m$ va $n$ sonlarining ikkalasi ham toq yoki ikkalasi ham juft bo'lsa, A plitkani ishlatib, aks holda B plitkani ishlatib	<input type="radio"/>

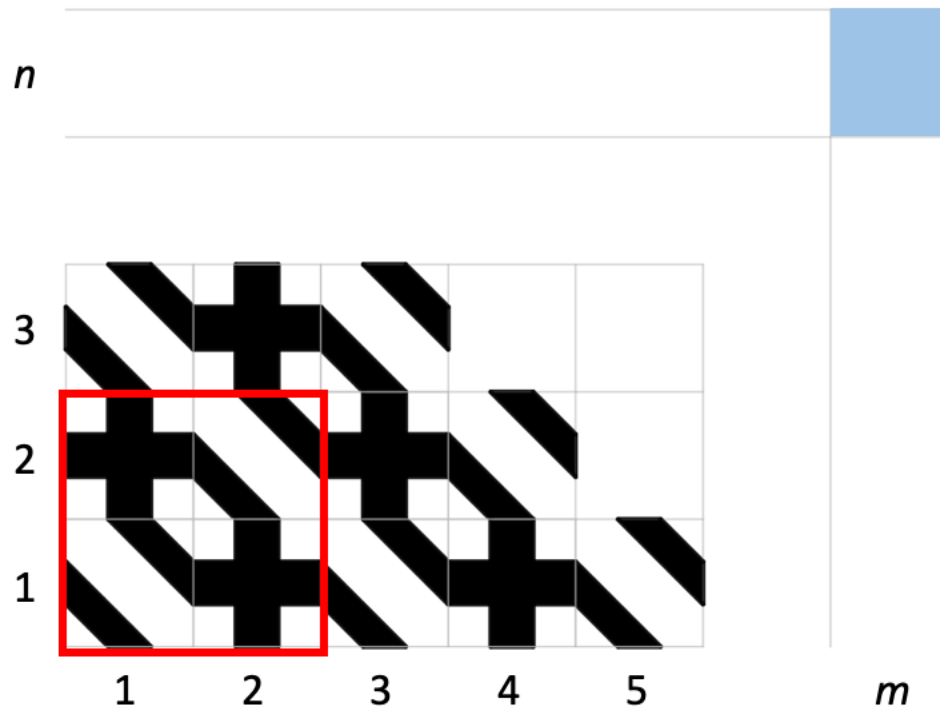
## Plitka yotqizish



A plitka



B plitka





### Plitka yotqizish

#### Muhokama

Kirishni o'qing.

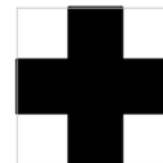
Naqsh yasashning yana bir usuli - har bir plitka uchun mos keladigan katakchaga harflarni yozib chiqishdan iborat.

Naqshni yozuvga o'tkazishda harflardan foydalanishni o'rganing. So'ngra "KEYINGISI" tugmasini bosing.

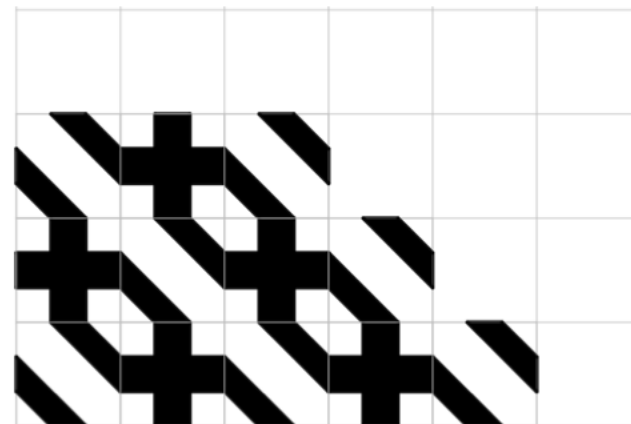
### Plitka yotqizish



A plitka



B plitka



A	B	A			
B	A	B	A		
A	B	A	B	A	

**Plitka yotqizish**

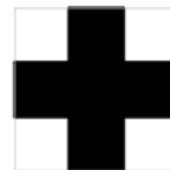
Savol 4/5

O'ng tomondagi naqsh ikki xil (B va C) plitkani kombinatsiyasi yordamida hosil qilingan. Amirxon shu zaylda naqshni yoyib, polga plitka yotqizishni davom ettirmoqda.

Naqshni o'rganib chiqing.

Quyidagi qizil kvadrat o'ng tomondagi qizil kvadratga mos keladi. B va C harflaridan foydalanib, qizil kvadratning har bir katagida joylashadigan plitkani yozuvga o'tkazing.

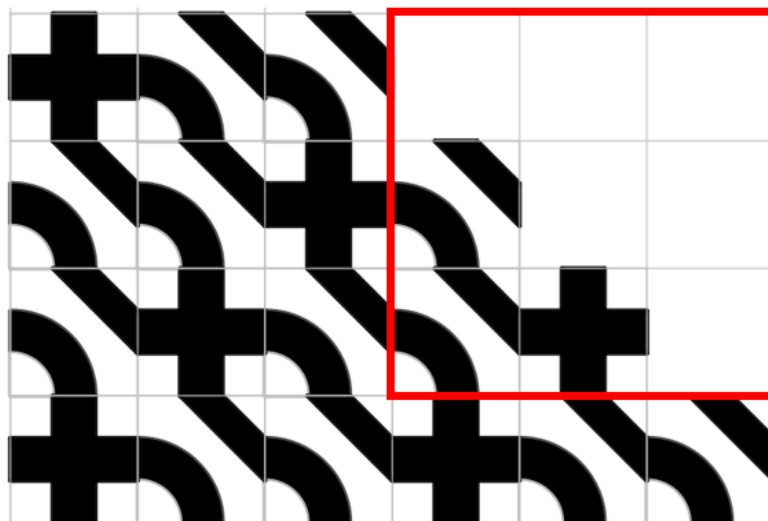
			—	—	—
			—	—	—
			C	—	—

**Plitka yotqizish**

B plitka



C plitka





## Plitka yotqizish

### Savol 5/5

O'ng tomondagi naqsh uch xil (A, B va C) plitkalarining kombinatsiyasidan foydalanib hosil qilingan juda katta maydonning o'rtasi hisoblanadi.

Naqshni o'rganing.

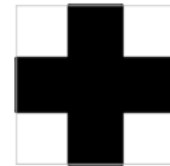
Quyidagi andazalardan qaysilari o'ng tomondagi naqshni hosil qilish uchun takrorlanishi mumkin bo'lgan plitkalarining  $3 \times 3$  bog'lamini tasvirlaydi (qo'llaniladigan bog'lamlarning barchasini belgilang).

Naqshni hosil qilishda ishlatiladigan $3 \times 3$ bog'lam				
A	B	C		<input type="radio"/>
B	A	C		
B	C	A		
B	C	A		<input type="radio"/>
C	A	B		
A	C	B		
A	B	C		<input type="radio"/>
B	C	A		
B	A	C		
A	B	C		<input type="radio"/>
B	C	A		
C	A	B		

## Plitka yotqizish



A plitka



B plitka



C plitka

